



THE UNIVERSITY OF
MELBOURNE

2025 Mary Lugton Postdoctoral Fellowships Scheme

Information Webinar

22 April 2024



THE UNIVERSITY OF
MELBOURNE

The University of Melbourne acknowledges the Traditional Owners of the unceded land on which we work, learn and live: the Wurundjeri Woi-wurrung and Bunurong peoples (Burnley, Fishermans Bend, Parkville, Southbank and Werribee campuses), the Yorta Yorta Nation (Dookie and Shepparton campuses), and the Dja Dja Wurrung people (Creswick campus).

The University also acknowledges and is grateful to the Traditional Owners, Elders and Knowledge Holders of all Indigenous nations and clans who have been instrumental in our reconciliation journey.

We recognise the unique place held by Aboriginal and Torres Strait Islander peoples as the original owners and custodians of the lands and waterways across the Australian continent, with histories of continuous connection dating back more than 60,000 years. We also acknowledge their enduring cultural practices of caring for Country.

We pay respect to Elders past, present and future, and acknowledge the importance of Indigenous knowledge in the Academy. As a community of researchers, teachers, professional staff and students we are privileged to work and learn every day with Indigenous colleagues and partners.



THE UNIVERSITY OF
MELBOURNE

WARNING

This material has been reproduced and communicated to you by or on behalf of the University of Melbourne in accordance with section 113P of the *Copyright Act 1968 (Act)*.

The material in this communication may be subject to copyright under the Act.

Any further reproduction or communication of this material by you may be the subject of copyright protection under the Act.

Do not remove this notice



THE UNIVERSITY OF
MELBOURNE

Welcome and Introduction

Prof Kate Smith-Miles

**Pro Vice-Chancellor
(Research Capability)**



Mary Lugton Postdoctoral Fellowships

Scheme overview



THE UNIVERSITY OF
MELBOURNE

Background – the life and bequest of Mary Lugton

- **Mary Lugton worked in the Baillieu Library for 43 years (1946-1989)**
- **Senior Reference Librarian**
- **University Bibliographer and published historian**





THE UNIVERSITY OF
MELBOURNE

Mary Lugton Postdoctoral Fellowships Scheme Overview



Competitive 2-year funding program for current staff or PhD graduates from the University of Melbourne



Supports Early Career Researchers with high research potential and aligned with Faculty priorities



Enhances competitiveness for external grants



In 2025, open to researchers in medicine and arts conservation

Mary Lugton Postdoctoral Fellowships Scheme Supports



2 years of salary commencing at level A.6



Up to \$25,000 research project costs



Academic mentoring at the Department, School and/or Faculty level



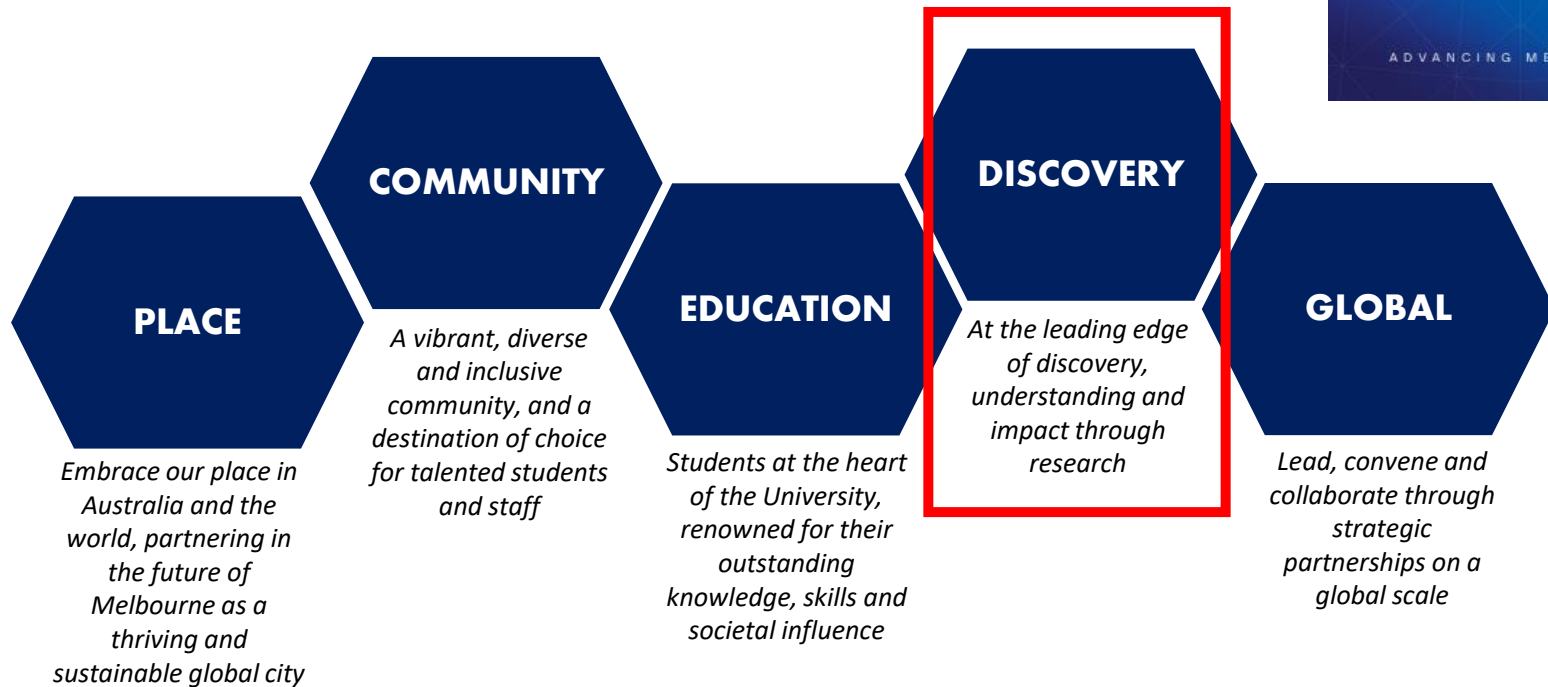
Access to suite of Researcher Development Unit support programs

Mary Lugton Postdoctoral Fellowships

Setting the institutional and scheme context



Advancing Melbourne (2020-2030)



Five intersecting themes will represent our key focus areas over the next decade



Advancing Melbourne Discovery

Ensuring Research Excellence and Impact

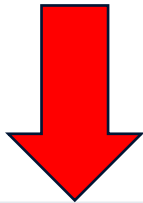
Principles of Research at Melbourne

- *Research excellence and impact are our primary indicators of success*
- *Academic freedom is paramount. Academics determine their own research path and are supported by opportunities from faculty and institutional strategy*
- *Basic research is a critical foundation for discovery and understanding*
- *We work with collaborators and partners to amplify the global impact of our research*
- *Research is conducted to the highest ethical standards with integrity and openness. This value is embedded in every aspect of our work, including in our choices of research partners and collaborators*
- *Research is integrated with the education of all our students, fostering of a spirit of enquiry and ongoing renewal of research ideas*



Advancing Melbourne Discovery

Ensuring Research Excellence and Impact





Researcher Development

- Research Capability
 - Early Career Researcher Grants
 - Postdoctoral Fellowships (McKenzie, Puzey, Mary Lugton, etc.)
 - Research Impetus Grants
 - ARC/NHMRC Fellowship salary gap supports
 - Researcher Development Unit (RDU)
- Research Quality
 - Mock ARC-style panel reviews from ExpERT panel
 - National Interest Test (NIT) statement workshops
 - Strategic targeted support (e.g. grant writing assistance)

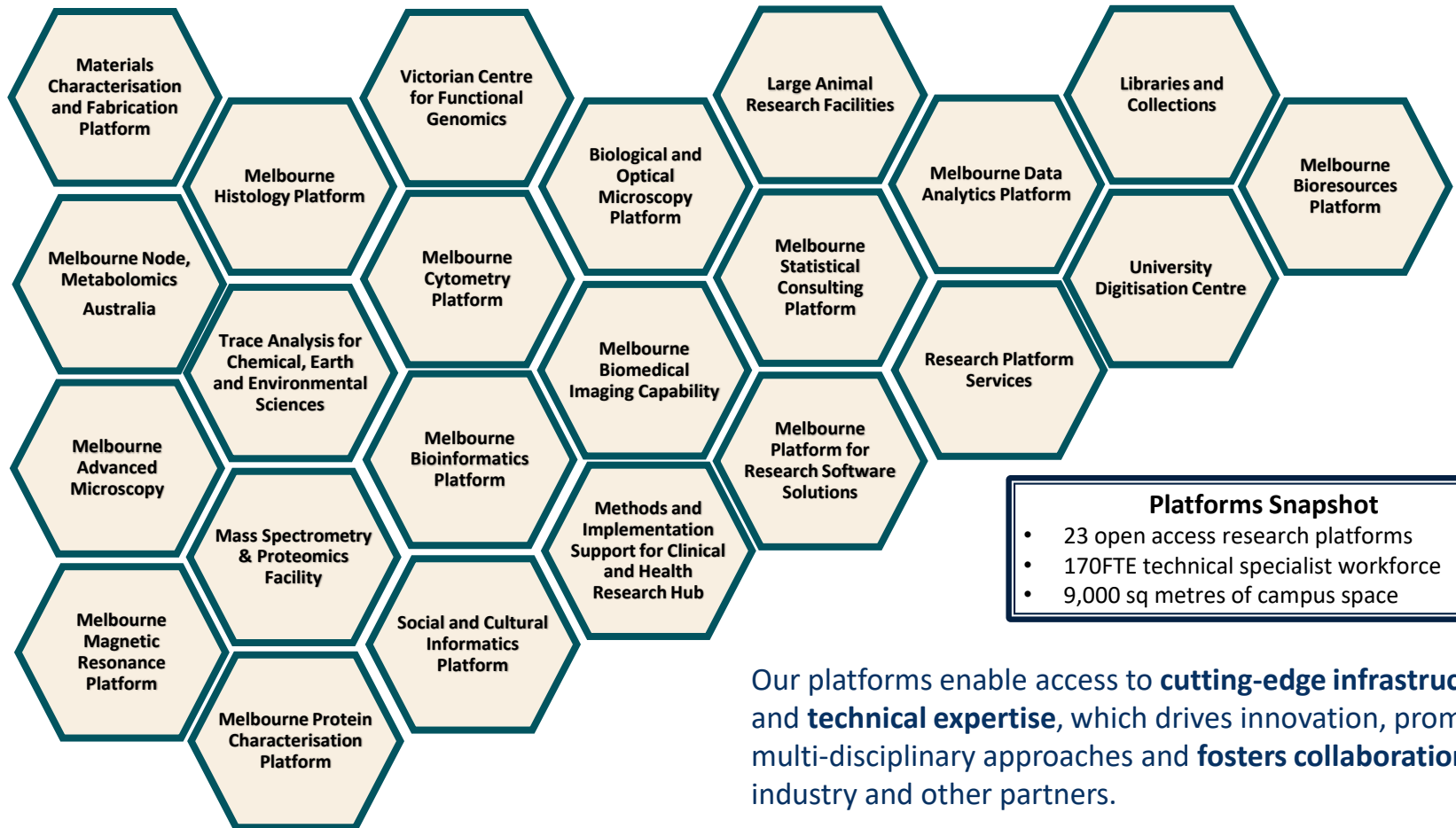


Advancing Melbourne Discovery

Ensuring Research Excellence and Impact



Research Infrastructure Platforms



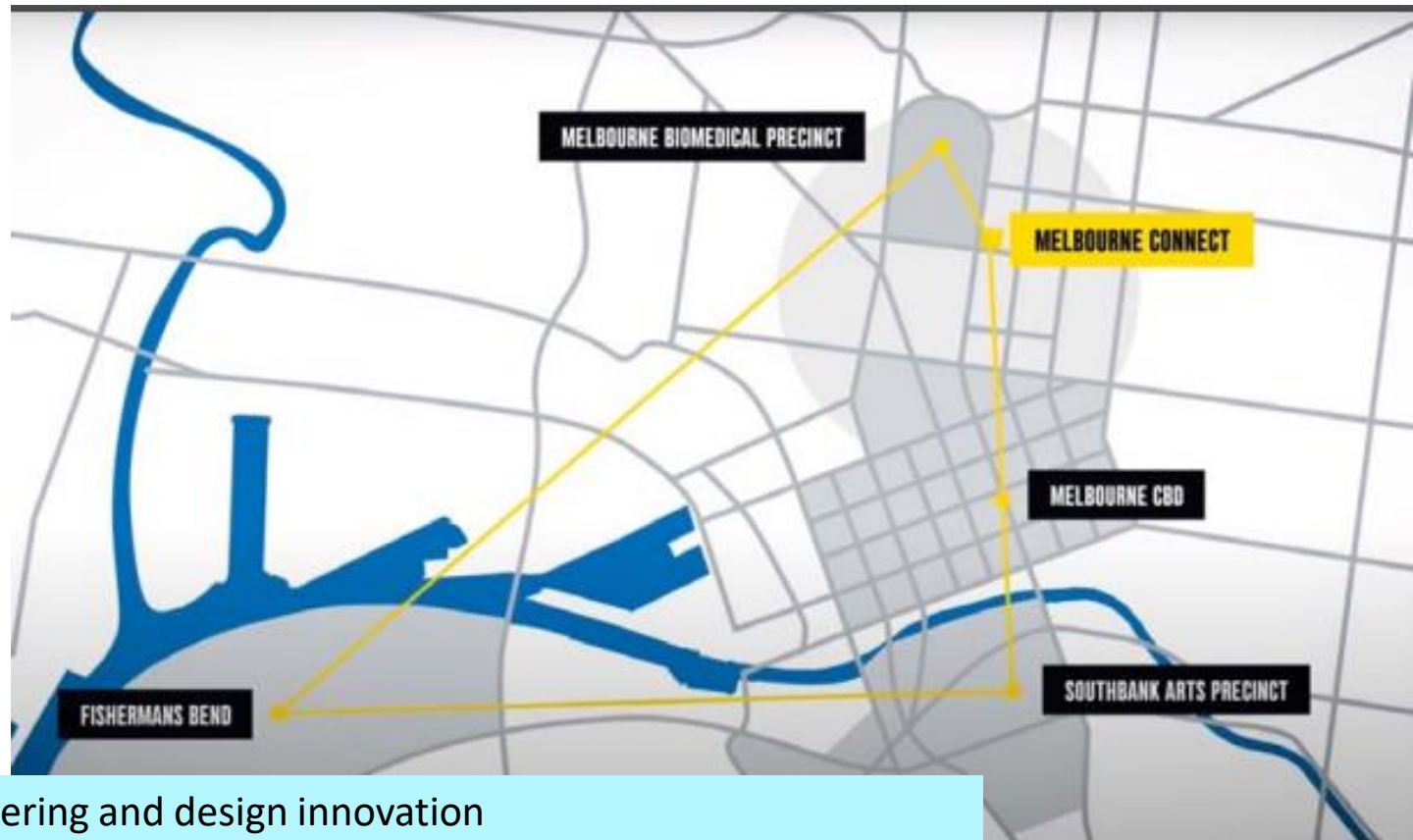
Platforms Snapshot

- 23 open access research platforms
- 170FTE technical specialist workforce
- 9,000 sq metres of campus space

Our platforms enable access to **cutting-edge infrastructure** and **technical expertise**, which drives innovation, promotes multi-disciplinary approaches and **fosters collaboration** with industry and other partners.



Research Precincts



Fisherman's Bend-Engineering and design innovation

Melbourne Arts Precinct-Cultural and creative partnerships

Melbourne City Council-Sustainable Cities Partnership

Melbourne Biomedical Precinct-AIID, ACMD, Burnet move, CSL bioincubator, BioCurate

Melbourne Connect-digital innovation, industry links and Cremorne digital hub

Dookie - NorVic Food and drought hub

Melbourne Interdisciplinary Research Institutes

Ambitious ideas. Collaboration. Local and global expertise. Solving the big challenges together.

Melbourne Disability Institute
Melbourne Energy Institute
Melbourne Social Equity Institute
Melbourne Climate Futures Indigenous Knowledge Institute
Peter McMullin Centre on Statelessness

Hallmark Research Initiatives

Addressing significant local and global challenges that cannot be solved by one discipline alone.

Affordable Housing
Anti-Racism
Bioinspiration
Creativity and Wellbeing
Future Food
Indonesia Democracy
Wildfire Futures
Work Futures

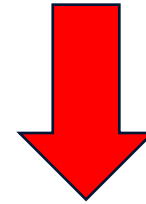
Ageing
Children's Lives
Computational Biology
Disability
Economic and Social Participation
Indigenous Materials
Statelessness

**Many other affiliated Research Institutes
(e.g. Doherty, Bio21, WEHI, Peter Mac, St Vincents, etc.)**



Advancing Melbourne Discovery

Ensuring Research Excellence and Impact





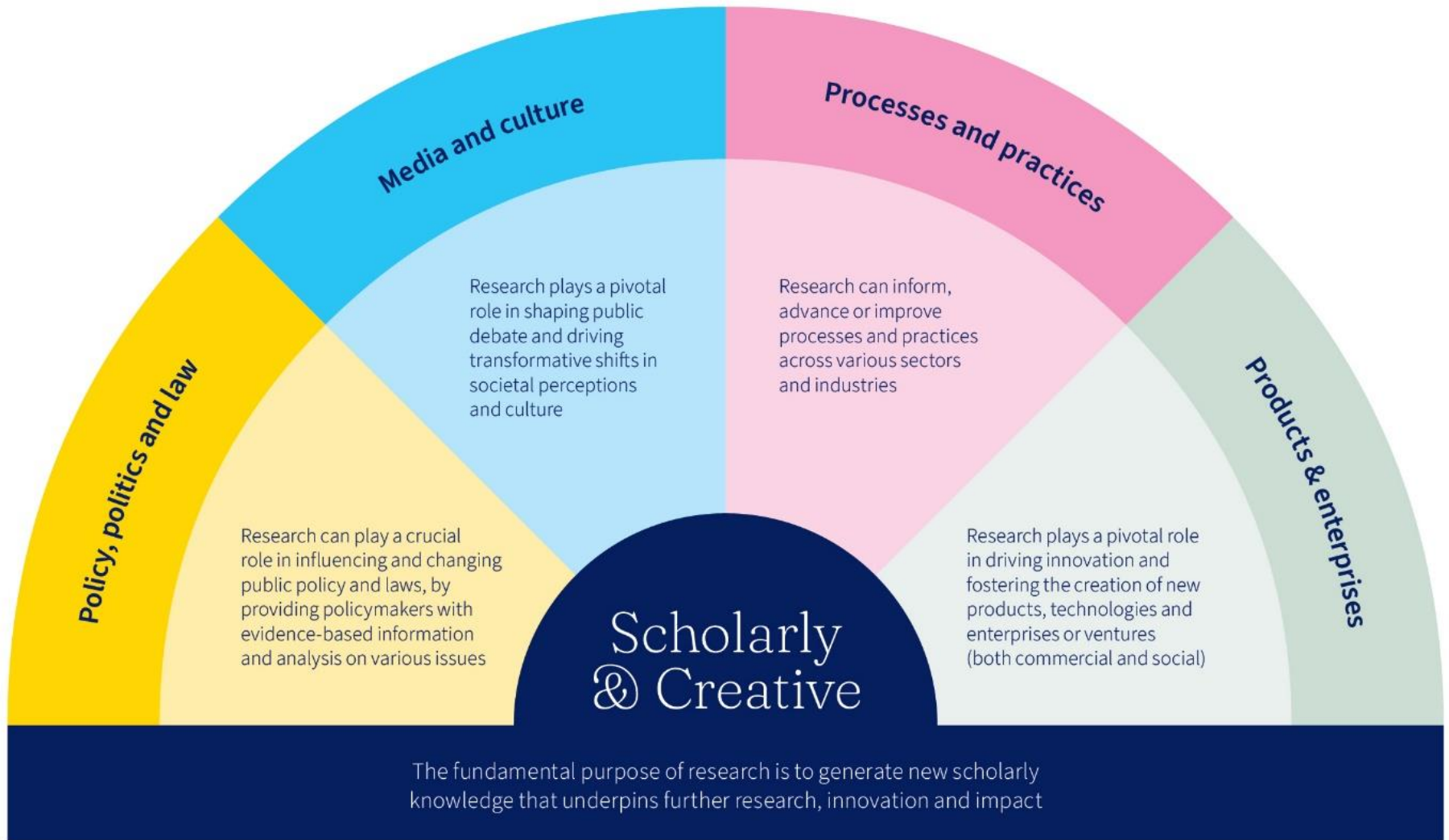
Research Impact at Melbourne

“The University defines research impact as the effect on, change or benefit to scholarly knowledge and the economy, society, culture, public policy or services, health, the environment or quality of life.”

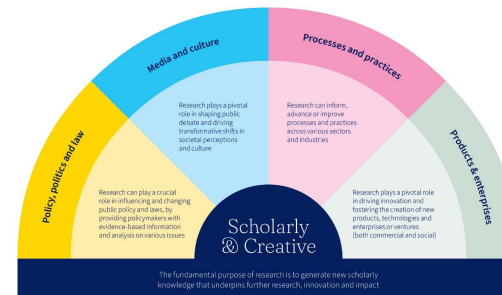
- Our *Research Impact Framework (2021)* builds and supports a culture of research impact
 - The framework was designed to be broad and inclusive, and to address the needs of diverse disciplines and approaches.
 - It considers all career stages and encompasses different pathways to impact.



Our Research Impact "fan" diagram



Facets of research impact



Facet	Aim	What is valued?
Scholarly and Creative	Advance knowledge and ways of knowing	Peer judgement, prestige, rigour, expertise
Policy, Politics and Law	Improve politics, policy and governance	Policy attention, recommendations, improved policy outcomes
Media and Culture	Facilitate public debate, perceptions and culture	Accessibility, broad reach, visibility, creativity and performance
Processes and Practice	Improve processes and practice	Recommendations and guidance, improved practices, processes, implementation
Products and Enterprises	Facilitate economic resource generation	Contribution to economic system

Mary Lugton Postdoctoral Fellowships

Scheme guidelines, forms and application process

Eligibility: To be eligible, applicants must:



- ✓ **have been awarded a PhD on or after 17 May 2019**
- ✓ **be employees (ongoing, fixed-term, or casual) of the University of Melbourne within the last 12 months of the application date or a PhD graduate from the University of Melbourne**
- ✓ **be an active art conservation or medicine researcher**
- ✓ **Seek Academic Endorsement (more on this later)**
- ✓ **Applicants must not have been awarded a competitively funded research fellowship from any institution since the award of their PhD**
- ✓ **ask two referees to submit the written testimonial via email to res-devschemes@unimelb.edu.au**
- ✓ **submit a fully compliant application form to the Themis Grants Submission Workbench**

Request an Eligibility Exemption if you:



THE UNIVERSITY OF
MELBOURNE

- ✓ **Were awarded your PhD before 17 May 2019 and have demonstrable career interruptions, or**
- ✓ **Are ineligible based on other eligibility criteria but have other demonstrable exceptional circumstances.**
- ✓ **Eligibility Exemption Requests (EER) are in part B-1 of the application form**
- ✓ **Applicants should be able to demonstrate that their research career has been significantly constrained or interrupted by circumstances such as serious or chronic illness, childbearing or child-rearing, primary caregiving for a family member, or working in a role where research was not the primary focus of the employment.**

Academic Contact and Endorsement Declaration



Early step – confirm your Academic Contact at the University of Melbourne

- Use your existing networks, or the University’s ‘Find an Expert’ search tool, to find academics in your field.
- Assist with completing and signing the Endorsement Declaration along with HOD/ADR (**this form is due as part of the application**)
- It is the Academic Contact’s responsibility to email the completed Endorsement Declaration (with HOD/HOS signature) to RIC **by the application deadline**.
- Remain as fellow’s regular point of contact and either provide informal mentoring or assist the fellow in finding a mentor.

Application form

The Application Form consists of 7 parts:

- Part A: Administrative Summary
- Part B: Education and Appointment Details
- Part B-1: Eligibility Exemption Request (EER) (only if relevant)
- Part C: Project Description (7 pages, uploaded as pdf – template available on scheme webpage)
- Part D: Proposed Budget
- Part E: Track Record and Strategic Alignment
- Part F: Support of Academic Contact and Head of Dept/School (*see Endorsement Declaration form on the website*)
- Part G: Reference Letters

Eligibility and Compliance

- ✓ Applications will be ineligible if:
 - ✓ They fall outside the eligibility window
 - ✓ Fail to meet page limits or formatting specifications outlined in the guidelines and/or application form
 - ✓ Are missing endorsement declarations
 - ✓ Are missing HoD Certifications or Themis Submissions

2025 ROUND

KEY DATES



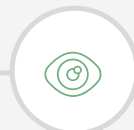
Scheme Opens

Release of Scheme Guidelines and application portal.



Scheme Closes

Applications due 3pm via SmartyGrants. Attach application to Themis Grants Submission Workbench



Selection Processes

Eligibility & compliance checks. Eligible applications are ranked by specialist committees. Central committee meets to decide



Outcomes

Outcomes Announced. Applicants must provide all requested acceptance details to ensure projects begin from January 2025

8 April 2024

**17 May
2024**

August 2024

**September
2024**

Selection Process



- Full Applications are assessed on a competitive basis by a Committee of senior University academics from a diverse range of disciplines, who were not involved in application ranking.
- Chaired by the Pro Vice-Chancellor (Research Capability).
- Awards are made on merit perceived by the central committee, considering faculty rankings as input
- Recommends fellowship awards to the DVCR – announced in approx. September 2024.

Selection Criteria



- Proposed Research Project (40%)
 - Significance of the research aims
 - Quality of proposal
 - Degree of innovation and novelty
 - Feasibility of the project;
 - Benefits of anticipated project outcomes.
- Track Record (40%)
 - The research experience and achievements
 - Relationship between the research proposed and your capability to deliver
 - Future research leadership capacity in terms of your research track record and vision, and capabilities to build collaborative networks
- Strategic alignment with University and faculty research priorities (20%)
 - Alignment of the research, and researcher, to strengthen institutional and faculty research priorities;
 - Extent to which the host faculty/School will be able to support the research
 - Extent to which the proposed research will foster broader collaboration and linkages

Tips for success



THE UNIVERSITY OF
MELBOURNE

- Use plain, succinct, compelling language (road test this with friends)
- Demonstrate academic excellence and achievement, relative to opportunity
- Show how your research is unique, fills a demonstrable gap (that you can convincingly fill)
- Show strategic alignment (*look at Advancing Melbourne 2030, and your faculty's research strategy, consider links with UoM/precinct research infrastructure, or Hallmark Research Initiatives and interdisciplinary centres*)
- Show how you will build research connections in the University, and externally
- Articulate a well-considered research program that has the potential to attract further funding.
- Show your leadership capabilities in research (e.g. GR supervision, professional societies, conferences).
- Articulate your proposed impact. Research objectives have specific, purposeful, and measurable outcomes (distinguish 'outcomes' from 'outputs')



For more information contact:
Researcher Development Schemes team in RIC
res-devschemes@unimelb.edu.au