



THE UNIVERSITY OF  
MELBOURNE

# 2025 Early Career Researcher (ECR) Grants Scheme

(2024 round funding to commence  
in 2025)

14 March 2024

Hosted by

Chancellery Research and Enterprise &  
Researcher Development Schemes (RIC)

[res-devschemes@unimelb.edu.au](mailto:res-devschemes@unimelb.edu.au)





THE UNIVERSITY OF  
MELBOURNE

# Welcome and Introduction

Prof Kate Smith-Miles

Pro Vice-Chancellor  
(Research Capability)



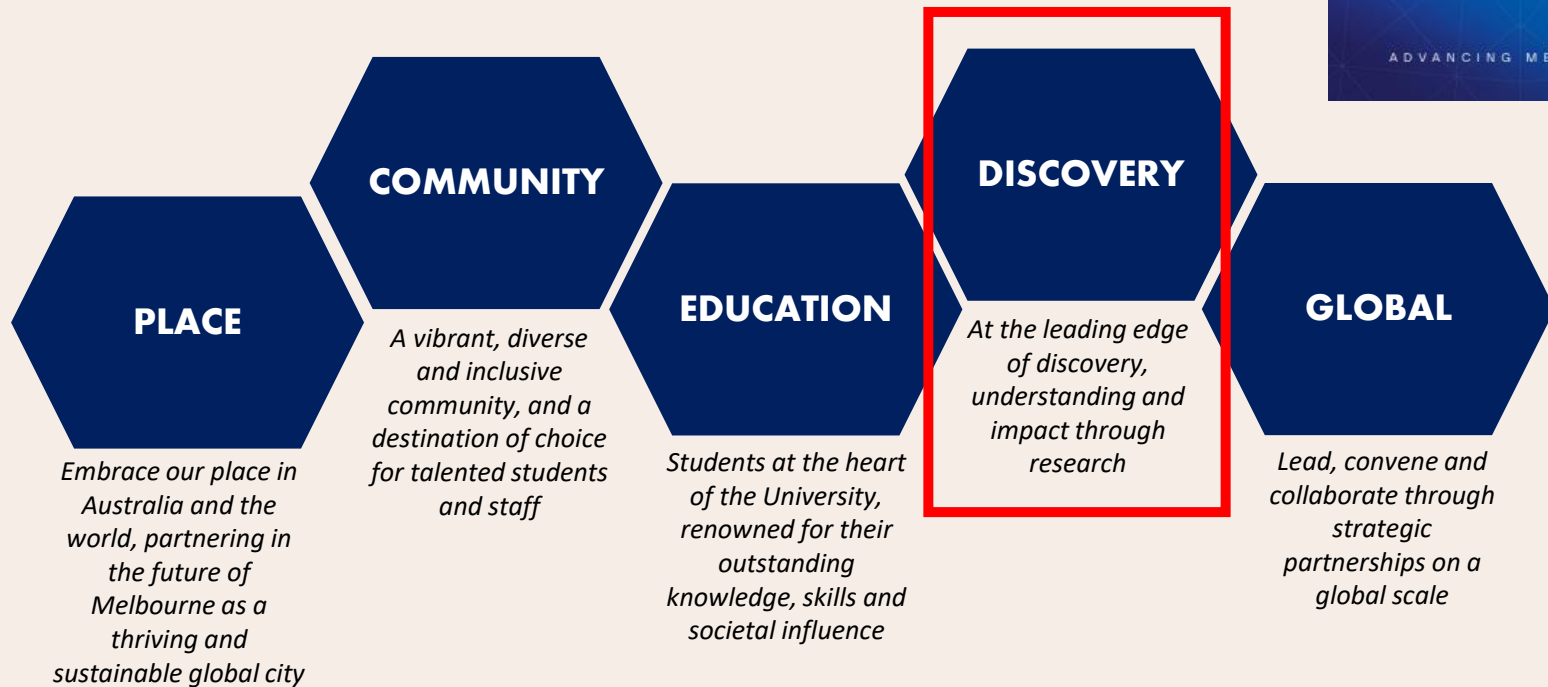


# ECR Grant Objectives

- a) Support ECRs with strong research potential to establish and progress their research careers by providing competitive funding for high-quality ECR-led research projects and pilot studies that are strategically aligned with School and Faculty research priorities and the 'Discovery' theme of **Advancing Melbourne 2030**;
- b) Provide ECRs with practical experience in preparing a grant application for peer review;
- c) Build ECRs' track profile and record to enhance their competitiveness in bidding for external research funds.



# Advancing Melbourne (2020-2030)



**Five intersecting themes will represent our key focus areas over the next decade**



# Advancing Melbourne Discovery

## Ensuring Research Excellence and Impact

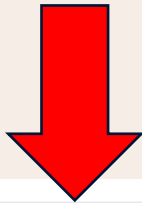
### *Principles of Research at Melbourne*

- *Research excellence and impact are our primary indicators of success*
- *Academic freedom is paramount. Academics determine their own research path and are supported by opportunities from faculty and institutional strategy*
- *Basic research is a critical foundation for discovery and understanding*
- *We work with collaborators and partners to amplify the global impact of our research*
- *Research is conducted to the highest ethical standards with integrity and openness. This value is embedded in every aspect of our work, including in our choices of research partners and collaborators*
- *Research is integrated with the education of all our students, fostering of a spirit of enquiry and ongoing renewal of research ideas*



# Advancing Melbourne Discovery

## Ensuring Research Excellence and Impact





# Researcher Development

- Research Capability
  - Early Career Researcher Grants
  - Postdoctoral Fellowships (McKenzie, Puzey, Mary Lugton, etc.)
  - Research Continuity Grants
  - ARC/NHMRC Fellowship salary gap supports
  - Researcher Development Unit (RDU)
- Research Quality
  - Mock ARC-style panel reviews from UoM College of Experts
  - National Interest Test (NIT) statement workshops
  - Strategic targeted support (e.g. grant writing assistance)



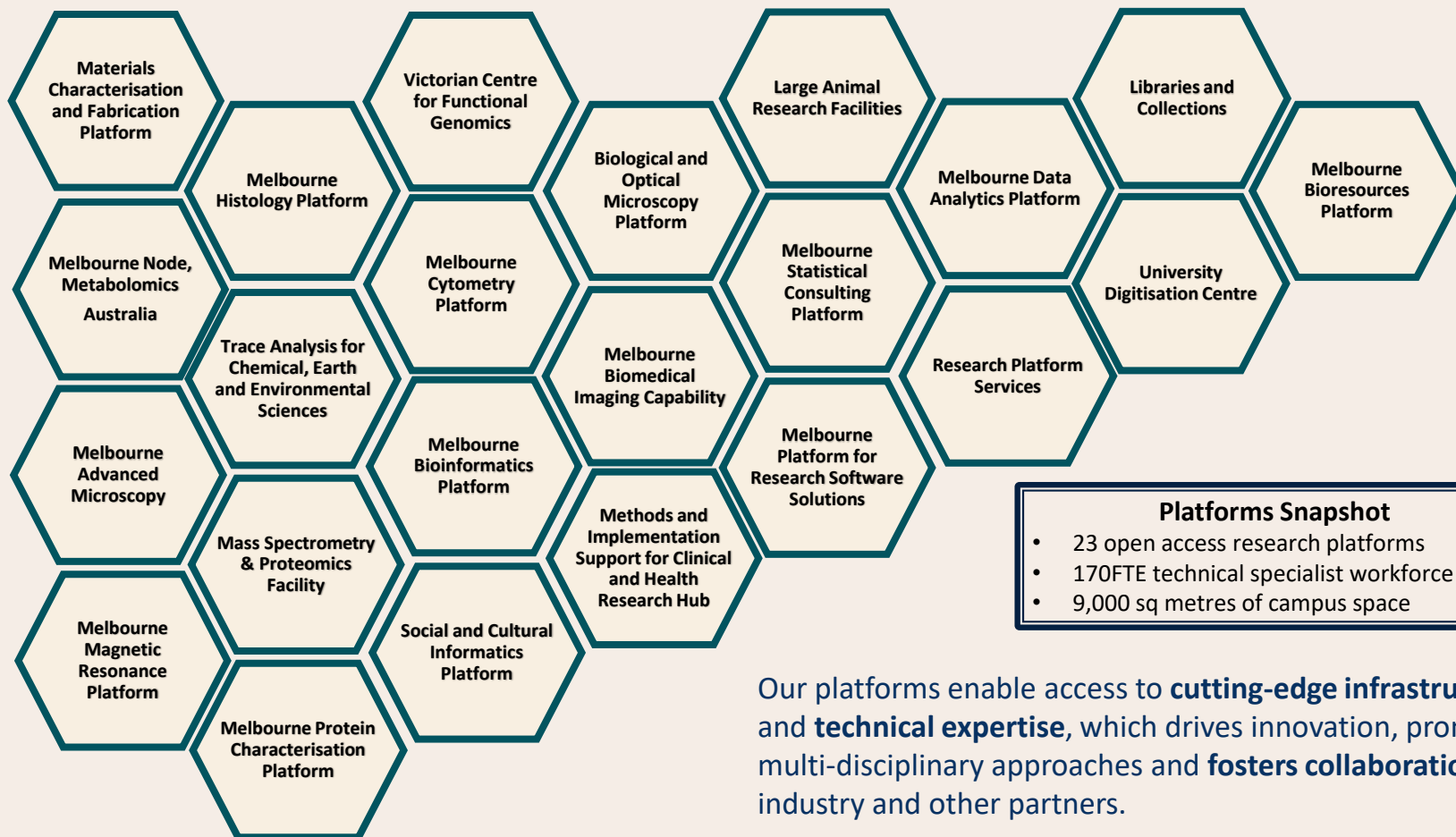
# Advancing Melbourne Discovery

## Ensuring Research Excellence and Impact





# Research Infrastructure Platforms



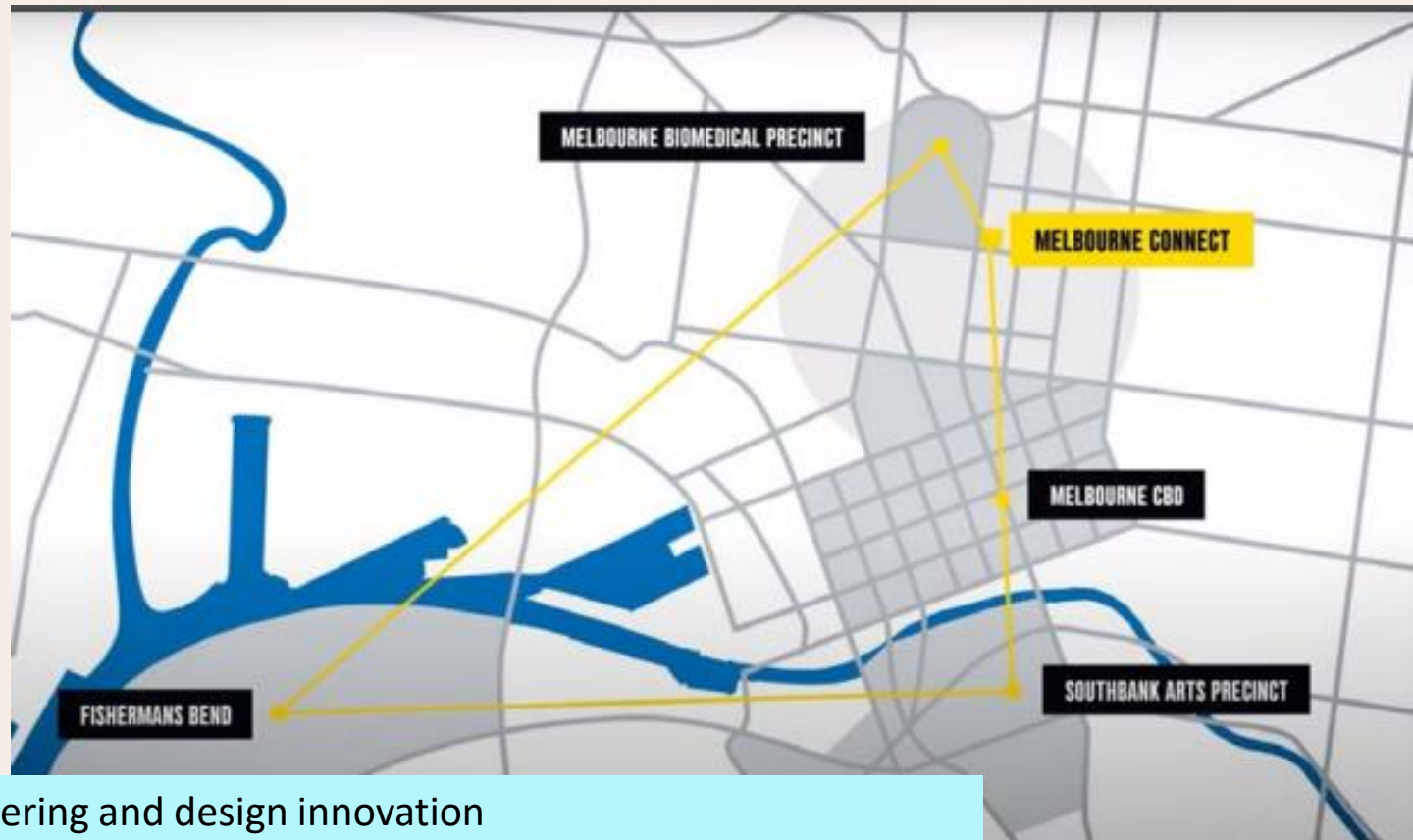
**Platforms Snapshot**

- 23 open access research platforms
- 170FTE technical specialist workforce
- 9,000 sq metres of campus space

Our platforms enable access to **cutting-edge infrastructure** and **technical expertise**, which drives innovation, promotes multi-disciplinary approaches and **fosters collaboration** with industry and other partners.



# Research Precincts



**Fisherman's Bend**-Engineering and design innovation

**Melbourne Arts Precinct**-Cultural and creative partnerships

**Melbourne City Council**-Sustainable Cities Partnership

**Melbourne Biomedical Precinct**-AIID, ACMD, Burnet move, CSL bioincubator, BioCurate

**Melbourne Connect**-digital innovation, industry links and Cremorne digital hub

**Dookie** - NorVic Food and drought hub

# Melbourne Interdisciplinary Research Institutes

Ambitious ideas. Collaboration. Local and global expertise. Solving the big challenges together.

**Melbourne Disability Institute**  
**Melbourne Energy Institute**  
**Melbourne Social Equity Institute**  
**Melbourne Climate Futures Indigenous Knowledge Institute**  
**Peter McMullin Centre on Statelessness**

# Hallmark Research Initiatives

Addressing significant local and global challenges that cannot be solved by one discipline alone.

**Affordable Housing**  
**Anti-Racism**  
**Bioinspiration**  
**Creativity and Wellbeing**  
**Future Food**  
**Indonesia Democracy**  
**Wildfire Futures**  
**Work Futures**

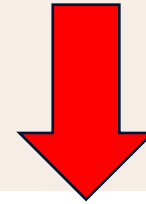
**Ageing**  
**Children's Lives**  
**Computational Biology**  
**Disability**  
**Economic and Social Participation**  
**Indigenous Materials**  
**Statelessness**

**Many other affiliated Research Institutes  
(e.g. Doherty, Bio21, WEHI, Peter Mac, St Vincents, etc.)**



# Advancing Melbourne Discovery

## Ensuring Research Excellence and Impact





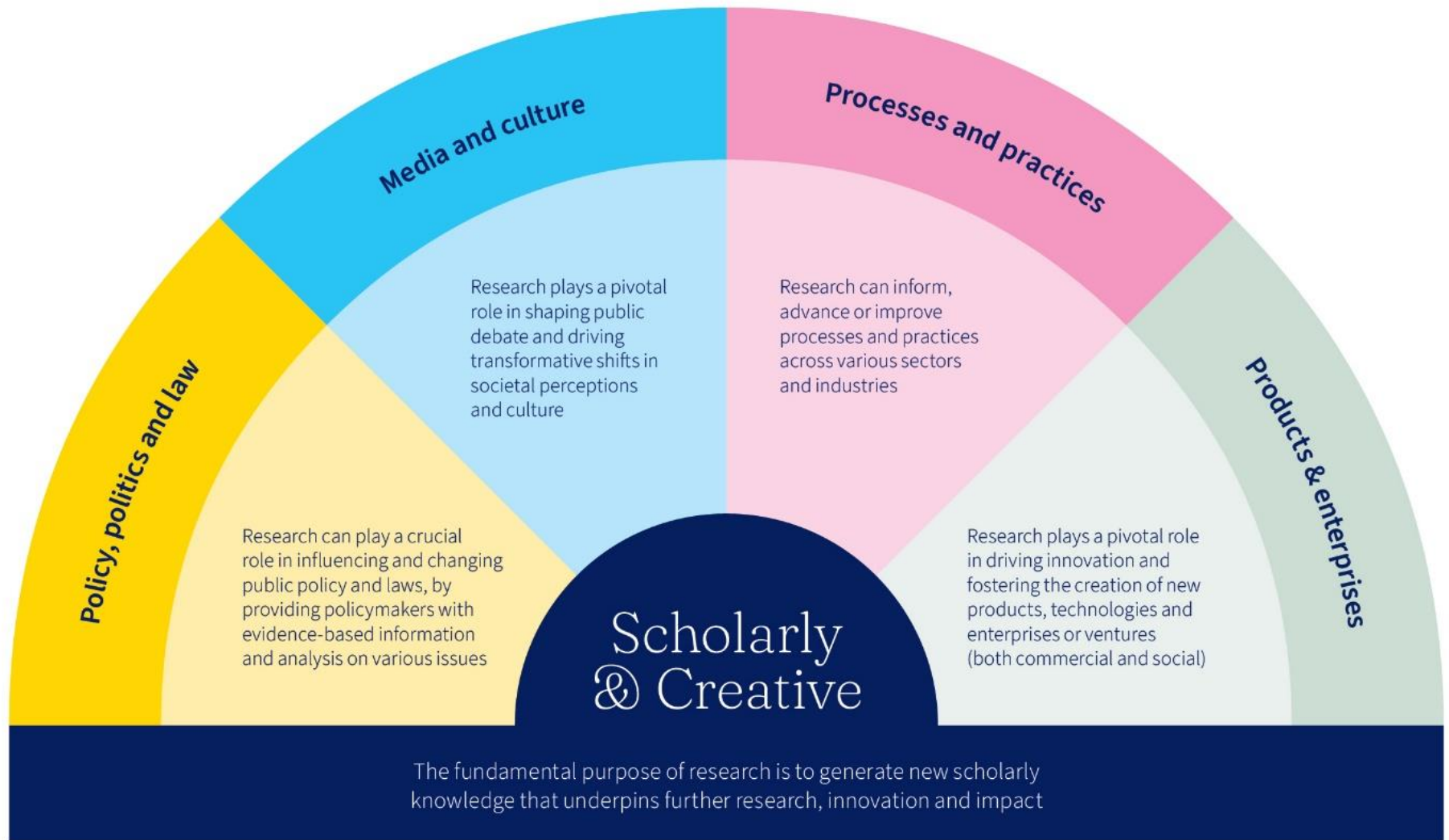
# Research Impact at Melbourne

“The University defines research impact as the effect on, change or benefit to scholarly knowledge and the economy, society, culture, public policy or services, health, the environment or quality of life.”

- Our *Research Impact Framework (2021)* builds and supports a culture of research impact
  - The framework was designed to be broad and inclusive, and to address the needs of diverse disciplines and approaches.
  - It considers all career stages and encompasses different pathways to impact.

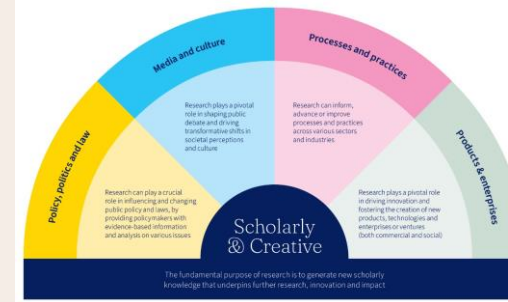


# Our Research Impact "fan" diagram





# Facets of research impact



Facet	Aim	What is valued?
Scholarly and Creative	Advance knowledge and ways of knowing	Peer judgement, prestige, rigour, expertise
Policy, Politics and Law	Improve politics, policy and governance	Policy attention, recommendations, improved policy outcomes
Media and Culture	Facilitate public debate, perceptions and culture	Accessibility, broad reach, visibility, creativity and performance
Processes and Practice	Improve processes and practice	Recommendations and guidance, improved practices, processes, implementation
Products and Enterprises	Facilitate economic resource generation	Contribution to economic system



THE UNIVERSITY OF  
MELBOURNE

# Early Career Researcher Grants

—  
**Tamica Grant**

**Researcher Development  
Schemes**

**Research, Innovation and  
Commercialisation (RIC)**



Competitive funding program for  
current academic staff



Targets ECRs with high research  
potential



Supports projects aligned with  
UoM priorities



Enhances competitiveness for external  
research funds



2025 ROUND

# Key Dates

4 MAR

Scheme opens

Applicants review the scheme document, and familiarize themselves with any faculty specific dates or requirements

26  
APRIL

Applications due

Applications are due 3 PM via SmartyGrants. Applications must also attach their application to a Themis grants workbench submission.

APR  
-  
SEP

Selection Process

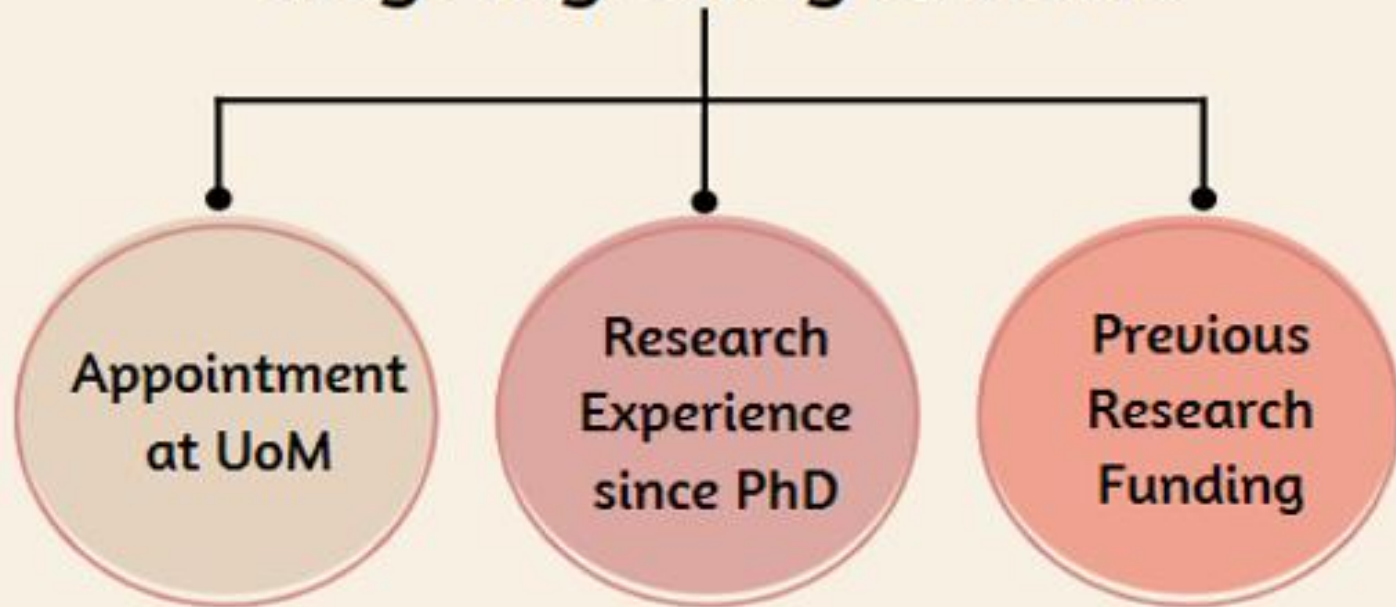
Applications are checked for eligibility and compliance. Eligible applications are ranked by faculties. The central selection committee meets to make final decisions for award.

OCT

Offers and  
Acceptance

Outcomes are announced in October. Applicants must provide all requested acceptance details to ensure their projects can begin by January 2025

# Key Eligibility Criteria



Applicants must hold a salaried academic appointment at UoM **or** one of the eligible affiliated institutes:

- Minimum 0.5 FTE
- From 1 Jan 2025 - 31 December 2025
- If the appointment is not yet confirmed, HoD signoff on your application is sufficient .

PhD completed on or after 26 April 2019

**OR**

Prior to 26 April 2019 but you have worked less than five years FTE in a research organisation - complete Part B1

Applicants are **ineligible** if they have previously been a CI or a major beneficiary of an ARC, NHMRC grant, or any other equivalent grant in a specific discipline or received a research capability grant or fellowship from the University of Melbourne.



# Resources

## **2025 SCHEME GUIDELINES**

THIS GUIDELINES DOCUMENT IS THE LAUNCHING POINT FOR ALL INFORMATION OUT THE ECR GRANTS PROGRAM FOR 2025

## **2025 FAQs AND INSTRUCTIONS TO APPLICANTS**

YOUR QUESTION-BY-QUESTION GUIDE TO THE ECR GRANT APPLICATION TO HELP YOU UNDERSTAND WHAT WE ARE LOOKING FOR, AND CREATE THE BEST APPLICATION

## **2025 APPLICATION FORM**

THE APPLICATION FORM HAS INBUILT INSTRUCTIONS ON HOW TO COMPLETE EACH SECTION

# Selection Process Overview



## Eligibility Review

RIC/CRE reviews each application for eligibility and compliance



## Faculty Ranking

Faculties provide a ranked list of eligible applications for the central committee review.



## Central Committee Review

Each application is reviewed by at least two members of the central committee



## Central Committee Meeting

70% split in proportion to faculty research performance.  
30% discretionary funding



## Outcome Notifications

Successful and Unsuccessful applicants are notified



## Previous Funding

<ul style="list-style-type: none"><li>I have received prior funding for non-research costs only (e.g., the Dyason - travel-only)</li></ul>	<ul style="list-style-type: none"><li>You are eligible</li></ul>
<ul style="list-style-type: none"><li>I have previously held a consultancy that was not obtained through a competitive process</li></ul>	<ul style="list-style-type: none"><li>You are eligible</li></ul>
<ul style="list-style-type: none"><li>I have been the CI or Fellow on an NHMRC, ARC grant or any other discipline-specific equivalent</li></ul>	<ul style="list-style-type: none"><li>Not eligible</li></ul>
<ul style="list-style-type: none"><li>I have previously held a University of Melbourne Postdoctoral Fellowship, including a Melbourne, McKenzie, Mary Lugton, or Puzey Fellowship.</li></ul>	<ul style="list-style-type: none"><li>Not eligible</li></ul>



# Selection Criteria



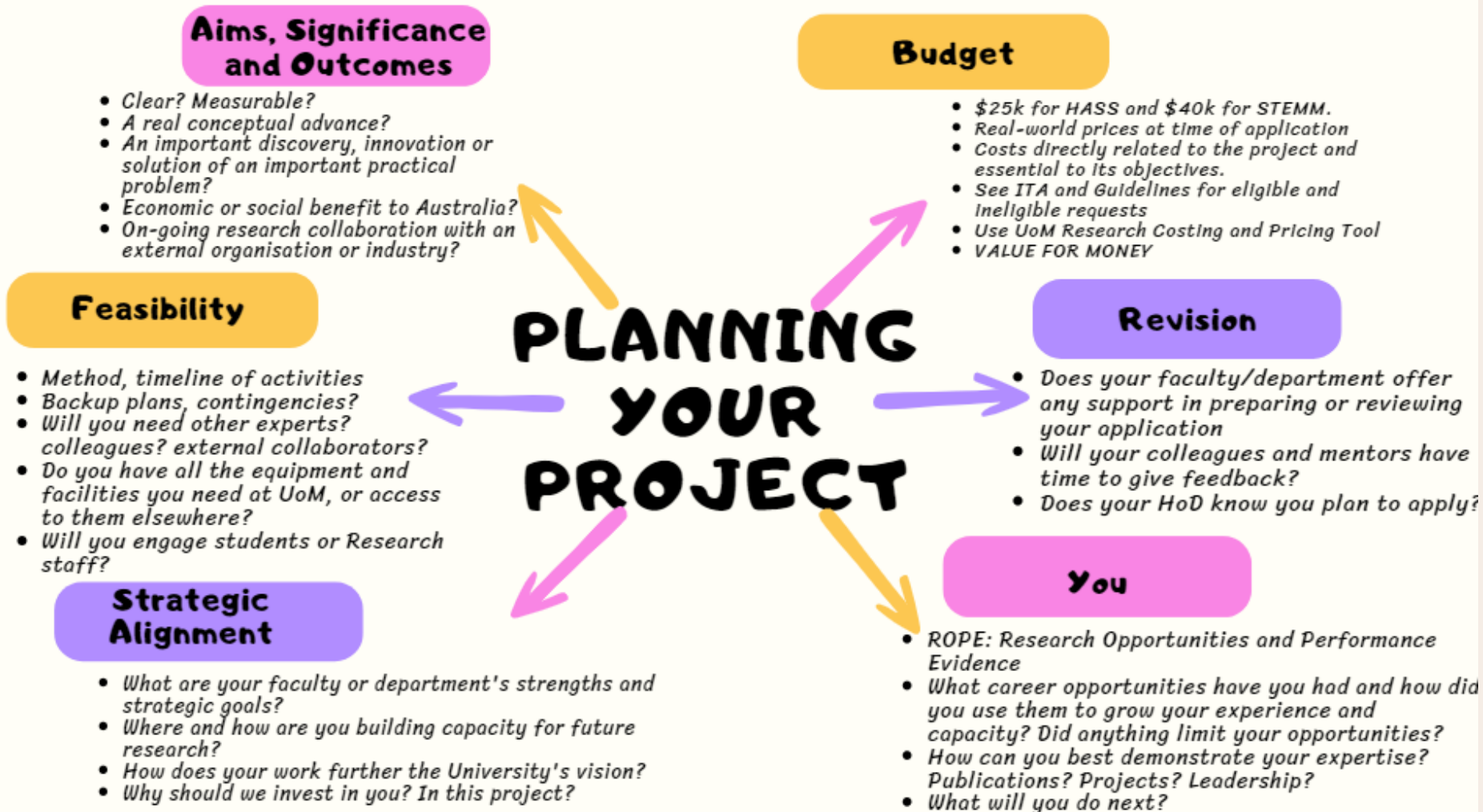
**a) Researcher development (40%)**



**b) Research project quality (40%)**



**c) Impact and benefit (20%)**



## Trajectory

Your career so far, your plan for future research, and how the ECR Grant fits in.

## Feasibility

How your experience, faculty, school, department and lab are set up to support this work

### QUICK TIPS TO

# TELL YOUR STORY

## Proposal and Budget

What work are you going to do and how will you make it happen?

## Why?

Why this project?  
Why you?  
Why the University of Melbourne?





# Q&A TIME